

## G $\alpha$ <sub>13</sub>

**Catalog Number:** 21020

**Gene Symbol:** Gna13

**Description:** Anti-G $\alpha$ <sub>13</sub> Rabbit Polyclonal Antibody

**Background:** Heterotrimeric G proteins are essential cellular signal transducers. G $\alpha$ <sub>13</sub> is one of the G proteins that could mediate cell migration and angiogenesis. Other biochemical and physiological functions of G $\alpha$ <sub>13</sub> are explored.

**Immunogen:** Recombinant full-length G $\alpha$ <sub>13</sub> protein

**Tested Applications:** ELISA, WB, IHC

**Recommended Dilutions:**

ELISA 1:100-1:5000

WB 1:100-1:2000

IHC 1:50-1:100

**Concentration:** 0.2 mg/ml

**Host:** Rabbit

**Clonality:** Polyclonal

**Purity:** Purified from serum

**Format:** Liquid

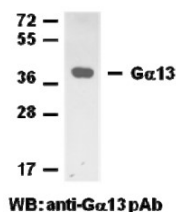
**Preservative:** No

**Constituents:** PBS (without Mg<sup>2+</sup> and Ca<sup>2+</sup>), pH 7.4, 150 mM NaCl and 50% glycerol

**Species Reactivity:** G $\alpha$ <sub>13</sub> polyclonal antibody recognizes G $\alpha$ <sub>13</sub> of vertebrates.

**Storage Conditions:** Store at -20°C. Avoid freeze / thaw cycles

Western blot:



WB: anti-G $\alpha$ <sub>13</sub> pAb

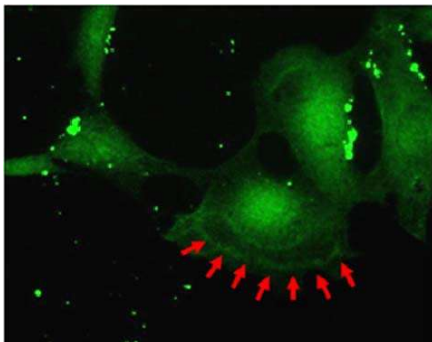
Western blot analysis of G $\alpha$ <sub>13</sub> proteins.

MEF whole-cell lysates were used for western blot with anti-G $\alpha$ <sub>13</sub> polyclonal antibody (Cat. # 21020).

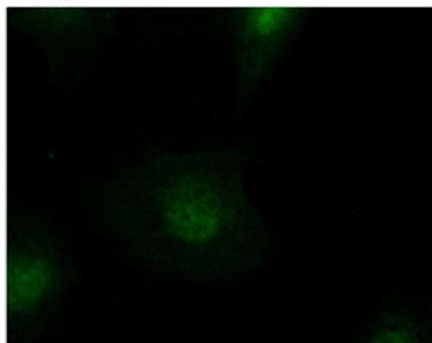
FOR RESEARCH USE ONLY. NOT FOR DIAGNOSTIC APPLICATIONS

## Immunofluorescence:

WT MEF Cells



$G\alpha_{13}^{-/-}$  Cells



## Immunofluorescence of mouse embryonic fibroblast (MEF) cells.

Wild type MEF cells (top panel) and  $G\alpha_{13}$  double knock-out cells ( $G\alpha_{13}^{-/-}$ , bottom panel) were fixed and stained with anti- $G\alpha_{13}$  polyclonal antibody (Cat. # 21020). Arrows indicate the dorsal ruffle structure of one cell.

---

FOR RESEARCH USE ONLY. NOT FOR DIAGNOSTIC APPLICATIONS